



# **Work Smarter, Not Harder**

**Understanding the Value of RPA**



**over**  
**10 billion**  
**hours are wasted daily on**  
**manual tasks**

Employees spend many hours a day completing repetitive, manual tasks that aren't fulfilling to their career and take time away from completing work that can better benefit your business.

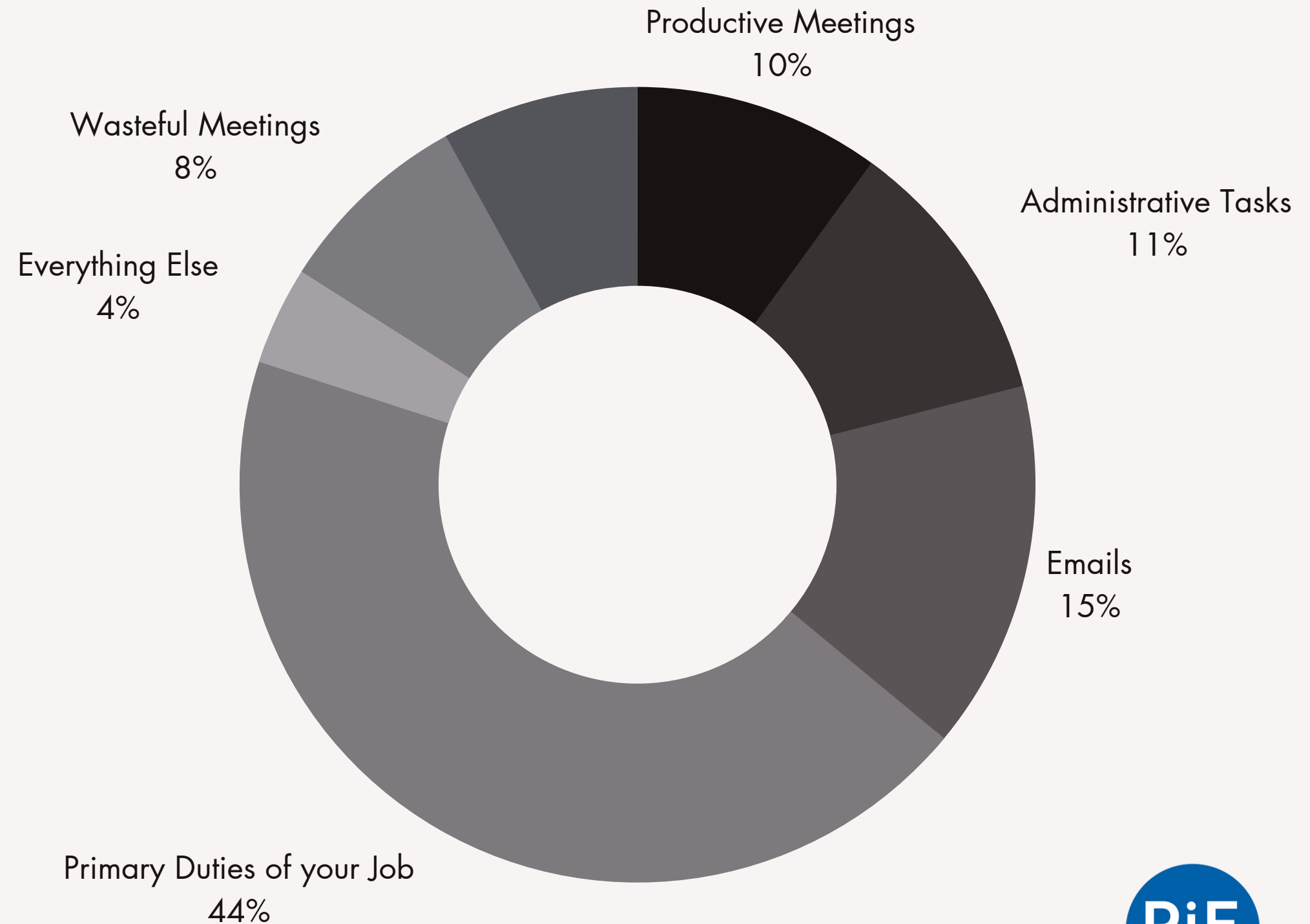


# Busywork is taking time away from real, thoughtful work.

It's a simple concept, the more time someone spends doing menial manual tasks, the less time they can spend on more important work.

Workers are spending less than half their week on their actual job duties. This leads to lower productivity, less happy employees, and a draining work environment.

PERCENTAGE OF TIME SPENT ON  
WORKWEEK ACTIVITIES





# Millions of manual processes use multiple applications and result in lost productivity

Processes like Accounts Payable, financial reporting, deal analysis, HR administration, and others can benefit from RPA.

RPA is built for any industry, any process, and for any level of end-user.

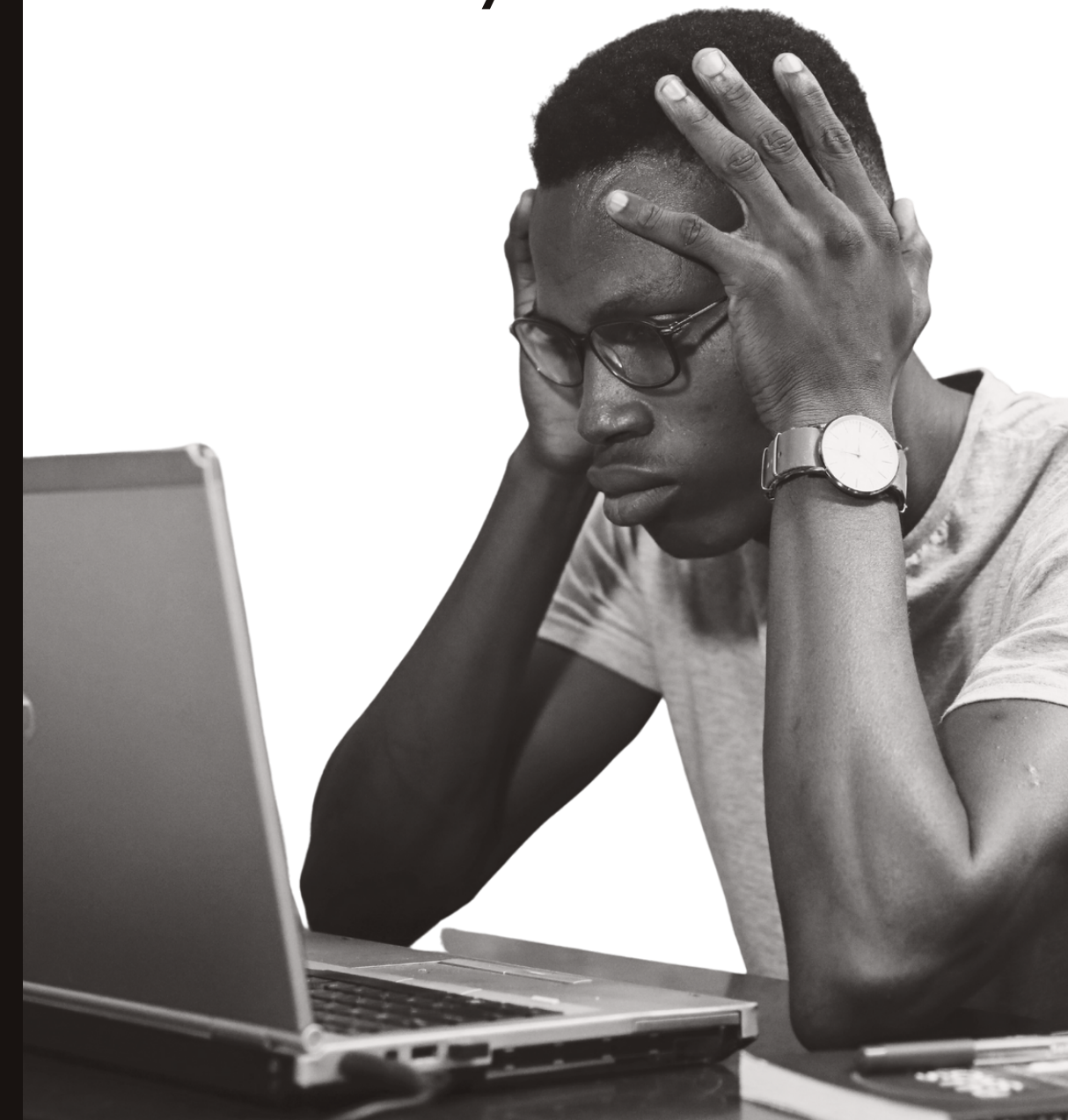
- Finance & Banking
- Insurance
- Healthcare
- Communications
- Manufacturing
- Retail
- Distribution
- Government



technologies

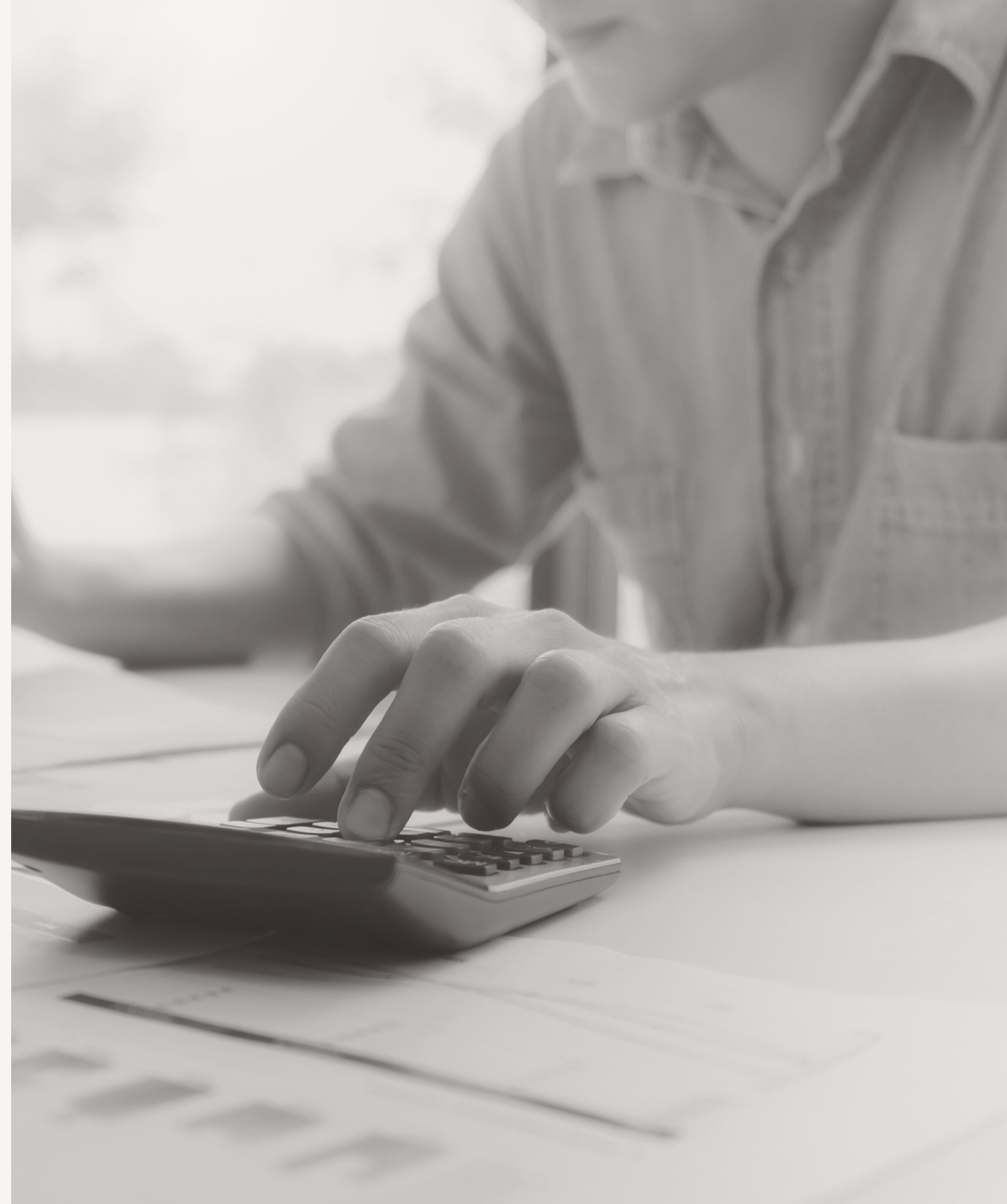
# 70%

increase in apps  
per company in  
the last 4 years



# Invest in robots so your employees don't become robots.

Your employees are so much more than just the tasks they complete, by implementing RPA they'll spend less time completing routine tasks and more time working towards your business's success.





# The time for automation is now

## Have you reconsidered your current processes?

Organizational leaders run into challenges that bring to light many of the setbacks that prevent organizations from completing work in an optimized manner. What are some instances for your organization that prove



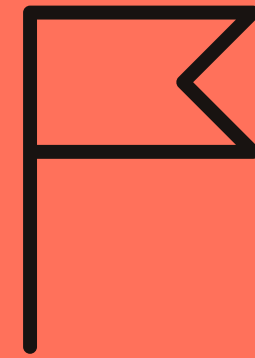
# How can you determine if a process can benefit from RPA?



It's a process with a standard readable electronic input



It's highly manual and repetitive



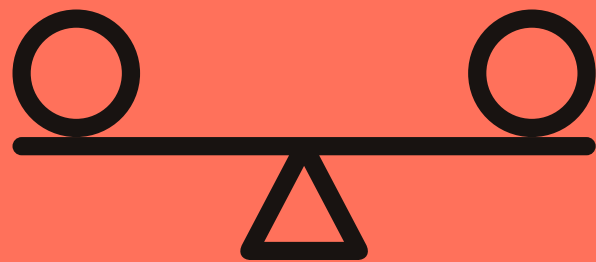
The process has a low exception rate



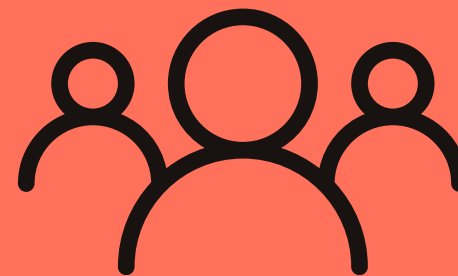
It's a rule-based process



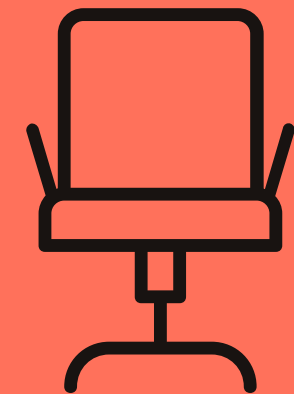
It is high-volume with a low complexity



It has a stable process and underlying applications



The process is performed by large teams



It's a mature "swivel chair" process

# What does a fully automated enterprise look like?

Every organization is different but there are common outcomes that can indicate when an organization is thriving with automation.

## **Assigns automatable work to robots**

Robots do the mundane and repeatable work

## **Provides a robot for every person in the company**

Robot assistants augment and empower human workers

## **Democratizes development**

Workers can automate simple tasks with low-code apps

## **Unleashes AI across every facet of work**

Deploy AI to build smarter robots and spot every automation opportunity

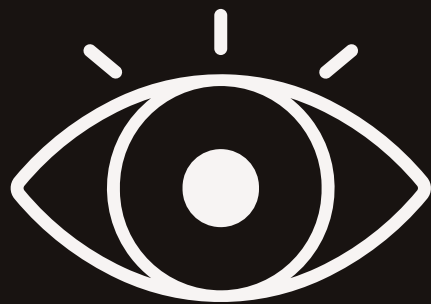


# How does RPA work?

## See

**AI / Computer Vision**  
Reads the screen

Your bot takes in the information presented to it on the screen, just like a person would when reading through data. You can choose exactly what the bot looks at within the process.



## Think

**AI / Machine Learning**  
Decides what to do

Once the bot has read the information given to it, it will then make a decision (based on the rules you gave it) on what to do next. But unlike a person thinking through a process, the bot does this in seconds or less.



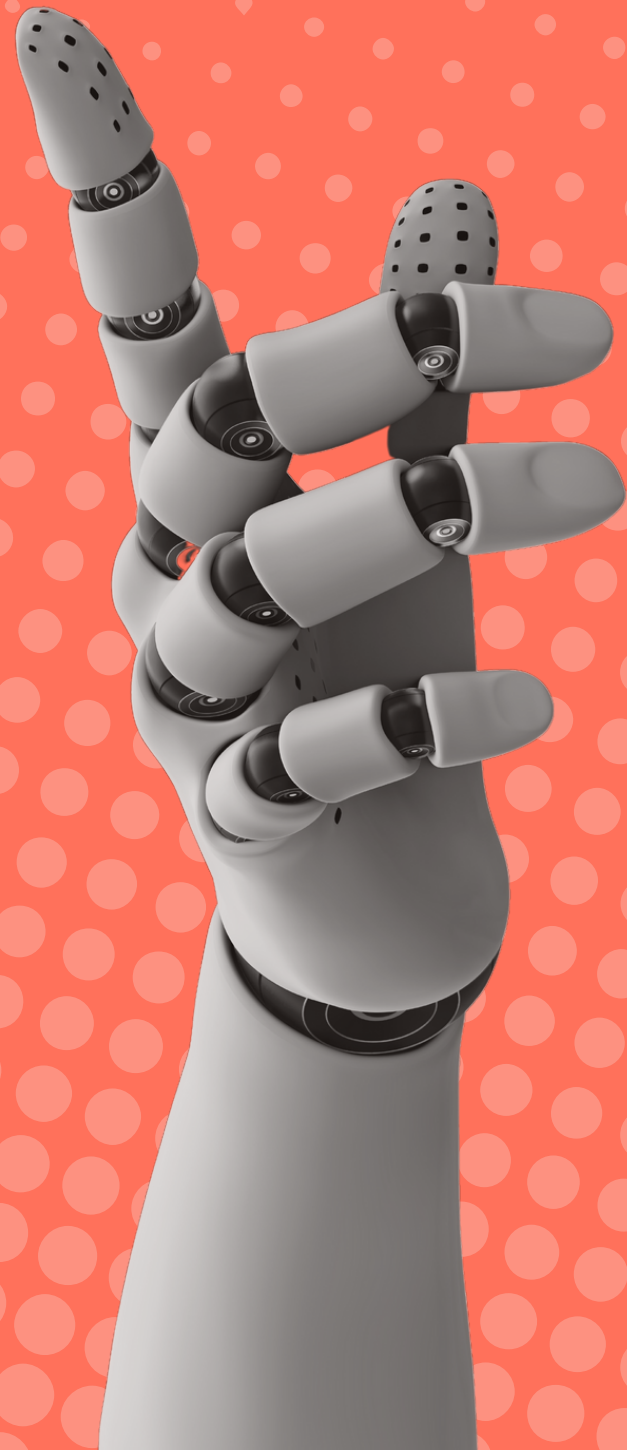
## Do

**RPA**  
Interacts with applications

With the right information and knowing what it needs to do, the bot jumps into action completing the task. The bot seamlessly works between applications and can complete the process quickly and with no human intervention.



# What can RPA do?



Most repetitive tasks that are typically completed by employees can be completed by Robotic Process Automation. When considering tasks for RPA to complete, you can focus on what some of the more time consuming and frustrating digital processes are for your employees.

- Logging into applications
- Moving files and folders
- Reading and writing to databases
- Connecting to system APIs
- Copying and pasting data
- Making calculations
- Extracting and processing structured and partially structured content from files
- Opening emails and attachments
- Scraping data from the web

# RPA in Action: Pine State Trading

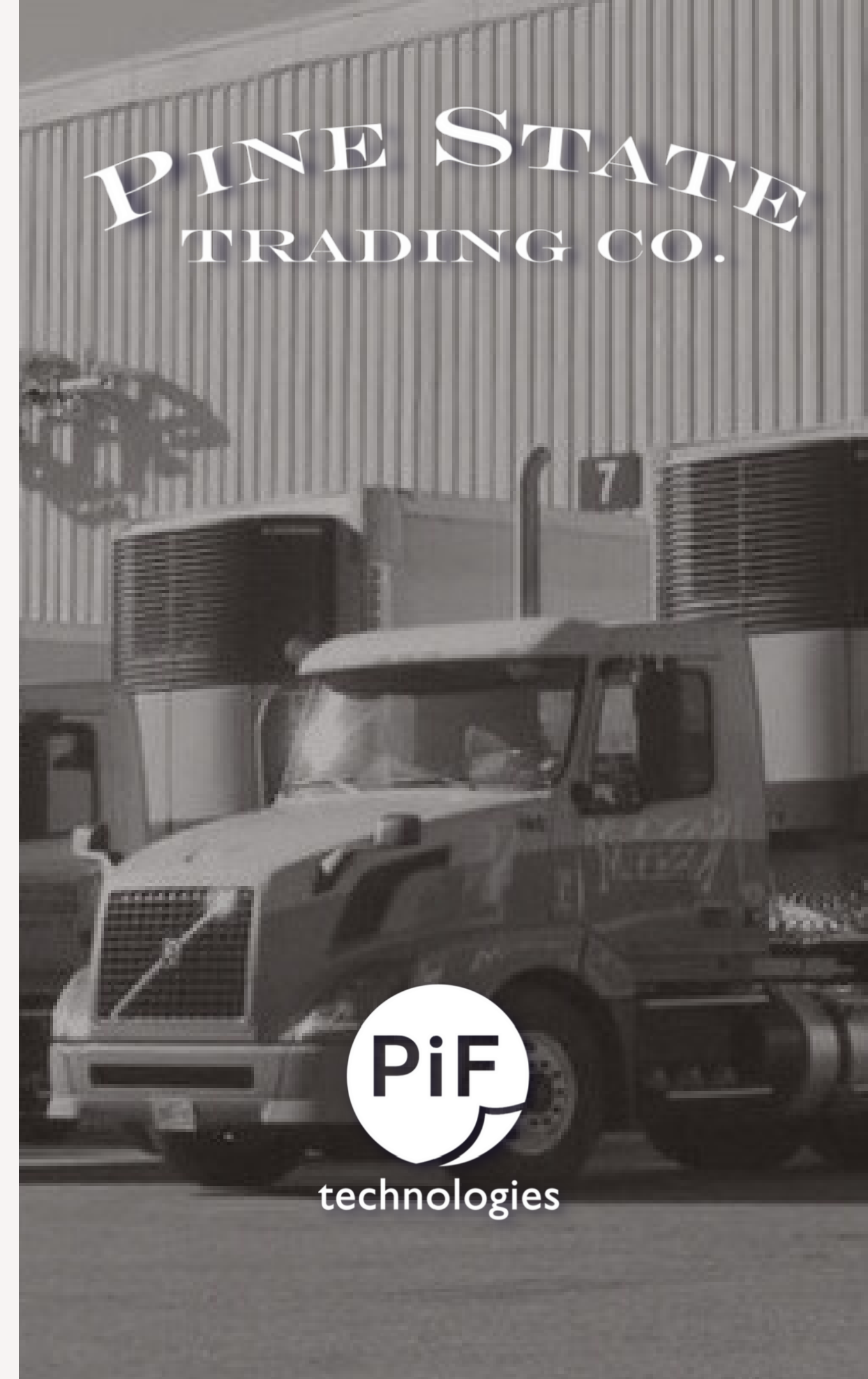
**Reduced labor costs by 80% and reduced time to close by 3 days**

Founded in 1941, Pine State Trading is celebrating 80 years in business in 2021. Pine State Trading is Maine's leader in the marketing and distribution of beverage products. Its companies –Pine State Beverage and Pine State Spirits – deliver brand name and private label beer, wine, and spirits to a customer base that is 2,000 strong and growing.

RPA as a part of their Accounts Payable Automation solution has allowed Pine State to reduce labor costs and time spent completing invoice processing. Their solution seamlessly integrates with their Dynamics SL and Bi Solver systems for bi-directional data pull.

"Previously, we had four employees devoted to AP processing, and today that headcount has been cut in half, down to 2. Additionally, the PiF solutions allowed us to change our month-end closing process, and have contributed to us closing our month in 2 days, which used to be a 10-day process." says Chief Financial Officer Gary Grunewald.

RPA is a core part of their auto-depletion allowances, transportation billing, and inventory management forecasting processes.





# Meet PiF

IPiF Technologies has been a leader in automation solutions since 1996. They've been a DocStar partner since day one and got their start selling a simple solution; scan, file, and retrieve. While the technology and complexity of their projects have evolved, their dedication to their customers and their desire to stay on the bleeding edge of technology has been their number one priority.

They cover a broad range of applications and industries. Popular implementations include AP Automation for Manufacturers and Distributors, Non-Profits, Construction firms, school districts, and any other business that faces inefficiencies in their processes.

Their expertise lies in their ability to design, deploy and support complex, fully integrated solutions with workflow automation, artificial intelligence including intelligent data capture, smart web forms, robotic process automation, and Cloud hosting.





**[piftechnologies.com](http://piftechnologies.com) • 888.934.4443 • [marketing@piftech.com](mailto:marketing@piftech.com)**